



## PowerLift™ Rare Earth Lift Magnets For Lifting Thick Non-Flexing Steel Items

- Easy release, no moving parts contact the load
- Lifts flat or round loads over 1" thick
- Lightweight Rare Earth design

These compact yet powerful lift magnets can be used on flat or round surfaces and contain an internal release device that does not damage the surface of the part being lifted. Permanent magnetic lifts eliminate the fear of dropping the load being lifted due to power failures.

For "Round Items", the lift capacity is approximately 50% of the stated value.



*Hold (Lbs.)	Length	Width	Weight (Lbs.)	Order No.	Price	Sale
220	3 $\frac{3}{8}$ "	2 $\frac{1}{2}$ "	7	NE70-220	\$ 248.65	<b>\$ 211.00</b>
660	6 $\frac{3}{8}$ "	3 $\frac{3}{8}$ "	22	NE70-660	595.15	<b>505.00</b>
1300	9 $\frac{1}{16}$ "	4 $\frac{7}{8}$ "	53	NE70-1300	804.40	<b>683.00</b>
2200	9 $\frac{3}{16}$ "	7"	110	NE70-2200	1,550.25	<b>1,317.00</b>

**\*Magnetic Lift Specifications:** For safety practices all magnetic lift devices listed in this advertisement have been derated by 50%. Use only on thick non-flexing ferrous items. Lifts must be centered on their loads. Never stand under a load being lifted.

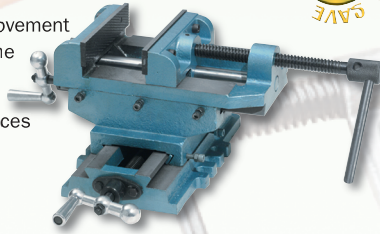
**\*Not recommended for painted or finish coated surfaces.** See page M-1241 in our 2005 Catalog for specifications.

CF-294\*64



## Cross Slide Vises

- For quick and precise X and Y axis positioning
- Locking levers on both the X and Y axis for securing the vise into position
- Ball-crank handles aid in rapid movement
- Three bolt lugs on each side of the base to match most table configurations
- CV30 and 60 have knurled jaw faces
- CV80 has smooth jaw faces



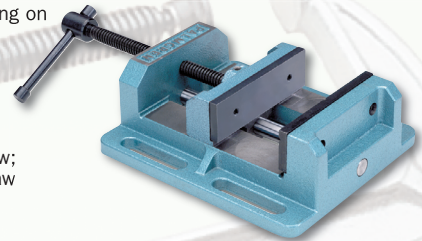
**Lifetime Warranty**

Jaw Width	Jaw Depth	Jaw Opening	Jaw Height	Base Dimensions	Order No.	Regular Price	Sale
6"	1 $\frac{7}{8}$ "	6"	6 $\frac{1}{2}$ "	11" x 6 $\frac{3}{4}$ "	JB50-CV60	\$167.00	<b>\$141.90</b>
8"	1 $\frac{7}{8}$ "	7 $\frac{1}{8}$ "	7 $\frac{1}{8}$ "	12 $\frac{1}{4}$ " x 7 $\frac{3}{8}$ "	JB50-CV80	224.00	<b>190.00</b>

D

## Low-Profile Drill Press Vises

- Base has four 1/2" shoulder slots for quick, easy positioning on drill press tables
- Replaceable jaws
- Moveable jaw on the DPL40 has vertical and horizontal V-groove
- DPL60 has a smooth jaw; DPL80 has a stepped jaw



Jaw Width	Jaw Depth	Jaw Opening	Jaw Height	Base Size	Order No.	Regular Price	Sale
4"	1 $\frac{5}{8}$ "	4"	2 $\frac{3}{8}$ "	6 $\frac{15}{16}$ " x 6 $\frac{1}{2}$ "	JB50-DPL40	\$ 51.00	<b>\$ 43.35</b>
6"	1 $\frac{3}{4}$ "	6"	3"	9 $\frac{5}{8}$ " x 8 $\frac{7}{8}$ "	JB50-DPL60	92.00	<b>78.00</b>
8"	1 $\frac{3}{4}$ "	8"	3 $\frac{3}{8}$ "	13 $\frac{3}{4}$ " x 11 $\frac{1}{16}$ "	JB50-DPL80	126.00	<b>105.00</b>

CF-275\*64

## Shoulder Eye Bolts

- Forged
- High tensile strength
- Manufactured to ASTM standards
- 1030 Carbon steel



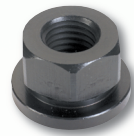
Dia.	Length	Eye Diameter Inside	Order No.	List Price	Sale
1/4"	1"	3/4"	SF50-004	\$ 2.30	<b>\$ 1.65</b>
5/16"	1 $\frac{1}{8}$ "	7/8"	SF50-005	2.35	<b>1.70</b>
3/8"	1 $\frac{1}{4}$ "	1"	SF50-006	2.40	<b>1.75</b>
7/16"	1 $\frac{3}{8}$ "	1 $\frac{1}{8}$ "	SF50-007	3.25	<b>2.40</b>
1/2"	1 $\frac{1}{2}$ "	1 $\frac{3}{16}$ "	SF50-008	3.40	<b>2.45</b>
5/8"	1 $\frac{3}{4}$ "	1 $\frac{3}{8}$ "	SF50-010	5.05	<b>3.65</b>
3/4"	2"	1 $\frac{1}{2}$ "	SF50-012	6.45	<b>4.70</b>
7/8"	2 $\frac{1}{4}$ "	1 $\frac{11}{16}$ "	SF50-014	9.10	<b>6.65</b>
1"	2 $\frac{1}{2}$ "	1 $\frac{13}{16}$ "	SF50-016	12.10	<b>8.85</b>
1 $\frac{1}{8}$ "	2 $\frac{3}{4}$ "	2"	SF50-018	18.70	<b>13.70</b>
1 $\frac{1}{4}$ "	3"	2 $\frac{9}{16}$ "	SF50-020	24.45	<b>17.90</b>
1 $\frac{1}{2}$ "	3 $\frac{1}{2}$ "	2 $\frac{1}{2}$ "	SF50-024	43.35	<b>31.80</b>
1 $\frac{3}{4}$ "	3 $\frac{3}{4}$ "	2 $\frac{7}{8}$ "	SF50-028	65.90	<b>48.35</b>
2"	4"	3 $\frac{1}{4}$ "	SF50-032	85.50	<b>62.70</b>

C

CF-055\*64

## TECO Flange Nuts

- Designed to equalize thread loads
- Black oxide
- Case hardened
- 12L14 Material



A	B	C	D	E	Order No.	Sale
1/4 - 20	5/8"	5/16"	3/32"	1/2"	SG50-41601	<b>\$ 1.35</b>
5/16 - 18	3/4"	3/8"	1/8"	9/16"	SG50-41602	<b>1.52</b>
3/8 - 16	7/8"	1/2"	1/8"	1 $\frac{1}{16}$ "	SG50-41603	<b>1.72</b>
7/16 - 14	1"	9/16"	5/32"	3/4"	SG50-41604	<b>1.72</b>
1/2 - 13	1 $\frac{1}{8}$ "	1 $\frac{1}{16}$ "	3/16"	7/8"	SG50-41605	<b>1.72</b>
5/8 - 11	1 $\frac{1}{8}$ "	1 $\frac{3}{16}$ "	3/16"	1 $\frac{1}{16}$ "	SG50-41606	<b>2.15</b>
3/4 - 10	1 $\frac{1}{8}$ "	1"	1/4"	1 $\frac{1}{4}$ "	SG50-41607	<b>3.28</b>
7/8 - 9	1 $\frac{3}{4}$ "	1 $\frac{1}{8}$ "	1/4"	1 $\frac{1}{8}$ "	SG50-41608	<b>4.48</b>
1 - 8	2"	1 $\frac{1}{4}$ "	1/4"	1 $\frac{5}{8}$ "	SG50-41609	<b>5.36</b>
1 $\frac{1}{4}$ - 7	2 $\frac{1}{2}$ "	1 $\frac{1}{4}$ "	1/4"	1 $\frac{13}{16}$ "	SG50-41611	<b>10.95</b>

G

CF-206\*64

ISO 9001 CERTIFIED



It's All About the Quality.

## Deep Forge C-Clamps Black Oxide

- Drop-forged heat-treated steel frame
- Swivel pads
- Black Oxide Coated to resist corrosion
- Copper Coated to resist weld splatter



Capacity	Throat Depth	Spindle Dia.	Min. Proof Test lbs.	Blk. Oxide Spindle Order No.	Regular Price	Sale
2"	2"	5/8"	3300	SG75-402	\$17.60	<b>\$14.05</b>
3"	2 $\frac{3}{8}$ "	5/8"	3500	SG75-403	20.40	<b>16.30</b>
4"	2 $\frac{3}{4}$ "	3/4"	4100	SG75-404	26.05	<b>20.80</b>
6"	3 $\frac{3}{8}$ "	3/4"	5400	SG75-406	35.15	<b>28.10</b>
8"	4 $\frac{1}{2}$ "	3/4"	5900	SG75-408	46.40	<b>37.10</b>
10"	5 $\frac{3}{8}$ "	3/4"	6200	SG75-410	58.05	<b>46.40</b>
12"	5 $\frac{3}{4}$ "	3/4"	9500	SG75-412	80.90	<b>64.70</b>

G

CF-297\*64