

Starrett® Since 1880

Global Series No. 799A Basic Electronic Caliper – No SPC Output

Features and Specifications:

- Resolution on .0005" (0.01mm)
- Lightweight, ergonomic design
- Zero at any position
- Automatic shut-off after 5 minutes of non-use
- Last measuring position retained when shut off
- Hardened stainless steel body for long life
- Integrated depth rod on all sizes
- Lock screw and fine adjustment thumb wheel

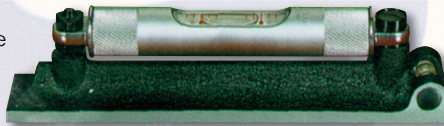


Catalog No.	Description	Order No.	Sale
799A-6/150	Electronic Caliper without output, 0-6" (0-150mm) in case	MV70-67410	\$ 94.50
799A-8/200	Electronic Caliper without output, 0-8" (0-200mm) in case	MV70-67412	133.50
799A-12/300	Electronic Caliper without output, 0-12" (0-300mm) in case	MV70-67621	250.95

D MT-785*64

Machinist's Levels

- Ground and graduated main vials
- Adjustable to a positive setting
- Involute groove running the length of the base
- Simultaneously level in both directions with the cross test vial



Starrett Item No.	Description	Order No.	Sale
98-6	6" (150 mm), with cross test vial	MV70-50441	\$ 75.55
98-8	8" (200 mm), with cross test vial	MV70-50442	94.25
98-12	12" (300 mm), with single plumb vial and cross test vial	MV70-50443	132.45

E MT-037*64

EXACT™ 24" Professional Framing Square

- One-piece tempered steel, 24" x 2" body & 16" x 1½" tongue
- Face & back permanently stamped with 1/8" graduations

6"/150 mm Carpenters' Try Square

A 6" (150 mm) steel blade permanently stamped with 1/8" graduations on one side and mm graduations on the other side.

Description	Order No.	Sale
24" Framing Square, Stamped Steel Scale	MV80-36129	\$ 9.95
6" Try Square, Steel Blade, Brass Bound Handle	MV80-36123	14.85

G MT-733*64

797B Series IP65 Electronic Digital Calipers

NEW!

The only American assembled IP65 Electronic Caliper

Accuracy and Long-Life Features

- Water resistant IP65 degree of protection
- Induction type linear encoder system
- Hardened stainless steel body for long life
- Depth rod with available attachment to seat the tool for more accurate measurements on all sizes, 6", 8" and 12"
- Fine adjustment for precision measurements
- Lock to hold the slide in position
- Cr2032 3V battery, 3500 continuous hours of battery life
- Linear accuracy meets DIN862
- Resolution is .0005"

Action Features

- In/mm conversion
- Zero at any position
- Manual off/on plus an automatic off after 4 hours of non use

Range	Order No.	Sale
6"/150mm	MV70-68659	\$149.95
8"/200mm	MV70-68660	206.95
12"/300mm	MV70-68661	324.95

E MT-715*64



Back Plunger Indicators

196 Series

- Inch reading
- .001" grad., 200" range, 0-100 reading
- 1/4" Shank diameter
- Accurate, reliable, and simple to operate
- Rugged, with few moving parts
- Smooth in operation

Starting At \$85.35



Starrett Item No.	Description	Order No.	Sale
196A1Z	0-100 with 3 contact points, adapter, 4 attachments*, case	MV70-50697	\$147.55
196B1	0-100 with 3 contact points, adapter	MV70-50699	85.35
196A6Z	0-100, antimagnetic with 3 contact points, adapter, 4 attachments*, case	MV70-50701	171.55

E MT-754*64

EXACT™ Torpedo Levels

Grooved Base & Magnetic Base

- Cast aluminum frame
- Top sight level vial



Starrett Item No.	Description	Order No.	Sale
A9	9" 3 vials (1 plumb, 1 level, 1 45°), top reading (V-Grooved)	MV80-36069	\$12.90
M9	9" 3 vials (1 plumb, 1 level, 1 45°), top reading (Magnetic Base)	MV80-36070	13.95
AM9	9" 3 vials (1 plumb, 1 level, 1 45°), side & top reading	MV80-36071	9.50

G MT-732*64

Jackmeister Screw Jack



- Easy set-ups on milling machines, CNC milling machines, inspection devices, etc.
- Approx. height adjustment: 4½" - 8"
- Quick acting height adjustment
- Fine adjusting ring for easy leveling
- Lock ring for locking height position
- Base adapter included for mounting on tables with either T-slot and nut capabilities or threaded CNC adapter plates



Order No. MV46-SJ2000

Sale \$92⁰⁰

D

MT-786*64

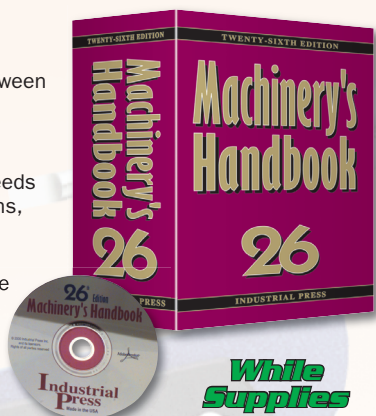
Machinery's Handbook 26th Edition

CD Handbook Features:

- Complete text search
- Extensive cross referencing between CD and print edition

Handbook Features:

- Provides extensive coverage of mathematics, cutting tools, speeds and feeds, screw thread systems, and other critical topics
- Cross references important subjects for greater convenience



While Supplies Last

26th Edition

Machinery's Handbook

Order No. MY50-26256

Sale \$65⁰⁰

Handbook on CD

Order No. MY50-26663

Sale \$65⁰⁰

26th Edition Machinery's Handbook & CD Combo

Order No. MY50-26205

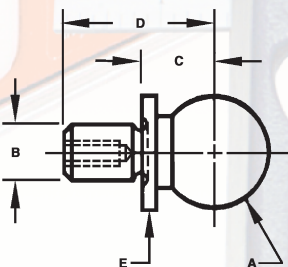
Sale \$115⁰⁰

G

MT-001*64

Toolmaker's Construction Balls

- Available with tapped hole for screw mounting
- Shoulder provides precise base to centerline dimension to facilitate locating ball center



A	B	C	D	E	Order No.	Tapped *	No Hole	Sale
0.5000 .002"	0.2500 +.0"/.0004	0.3125 ±.0002"	5/8	0.49	MA62-826875	MA62-826877		\$12.60

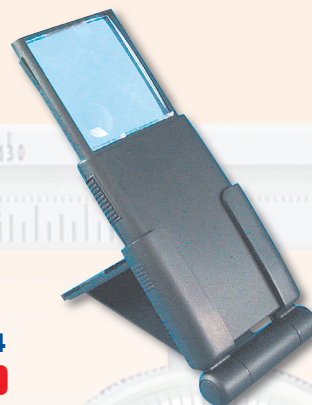
* Threaded hole #6-32 x 1/4" deep

MT-709*64

BAUSCH Multi Purpose & LOMB Stand Magnifier

Patented stand has multiple configurations allowing for all situations where hands-free magnification is needed

- 2X Magnification
- Battery powered light for low-light conditions
- Large 2" x 2¾" lens with 3X inset
- Use with or without the stand as needed



Order No. KA40-819014

Sale \$10⁵⁰

MT-665*64

MT 9" Mini Laser Level with Tripod

Specifications:

- FCC and FDA approved
- 9" Torpedo level projects a dot or line up to 160 feet away
- Equipped with three bubble vials for accurate readings at 0°, 45°, and 90°
- Aluminum multi-position tripod
- Complete with two "AAA" batteries



Order No. KP85-7088

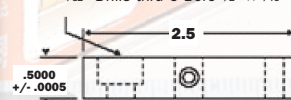
Regular Price \$15.90

Sale \$11⁵⁰

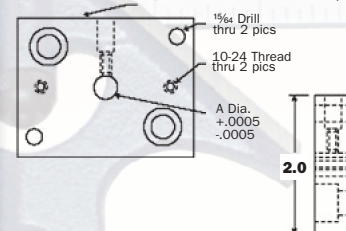
MT-710*64

Square Tooling Pad

1½" Drills thru C Bore ½" x ⅝" Deep



10-24 Thread C Bore 1¼" x ½" Deep



Mounting block for construction balls. Adjustable-type Construction Balls can be set at any desired height, then locked in place with a setscrew (not furnished).

Fits .250" Dia. Shank Tooling Balls

Order No. MA54-STP250

Sale \$13⁵⁰

MT-712*64

Prices Effective January 1, 2006 Through March 31, 2006

11

Mitutoyo Measures The World

IDC Type Digimatic Indicator with Absolute Encoder

- 0-.5"/0-12.7mm Range
- Absolute Encoder ensures all settings and readings maintained for the life of the battery
- Preset, Zero-Set, inch/mm, +/- direction and GO/±NG functions.
- Face rotates 330° for use at various angles
- SPC output provided
- Quantizing error: ±1 count
- Uses Mitutoyo Group 2 dial indicator mounting backs



Resolution	Accuracy	Order No.	Sale
.00005"/0.001mm	.00012"	MT80-543-252-70	\$284.90
.00005"/0.001mm	.00012"	MT80-543-252B-70†	284.90
.0001"/0.001mm	.00012"	MT80-543-253B-70†	284.90
.0005"/0.01mm	.0008"	MT80-543-272B-70†	206.90

E †Flat back MT-721*64

Magnetic Indicator Stands



Indicator Not Included

Mitutoyo Magnetic Stands accept all AGD-type dial indicators. Test indicators and probes having 3/8" dia. shank and/or lug back with 1/4" dia. mounting hole.

Features:

- On-Off Switch
- 9" Overall height
- 6" Rod
- 132 lbs. Pull magnet

Description	Pull	Order No.	Sale
W/6" Rod & Universal Clamp	132 lbs.	MT80-7010S	\$89.00
W/6" Adjustable Rod & Universal Clamp	132 lbs.	MT80-7011BN	99.00

C MT-636*64

Quick Mini Snap Caliper

It's the size of a business card, but with the power and precision of Mitutoyo inside.



The Quick Mini is a convenient snap-action pocket thickness gage offering LCD digital readout. Quick Mini is ideal for rapid checking of a variety of materials including metal, paper, plastics, and wood.

Description	Order No.	List Price	Sale
.5" Quick Mini	MT80-700-118	\$ 94.00	\$79.90
1" Quick Mini	MT80-700-122	106.00	89.90

C MT-668*64

MyCal Lite 6" Digital Caliper

MyCal Lite is economically priced to allow everyone to benefit from the advantages of modern digital gages. Large LCD digits in either inch or mm mode. Additionally, the zero point can be set anywhere to allow quick comparison measurements.

- Range: 0-6"/0-150mm
- Resolution: .001"/0.1mm
- Accuracy: ±.005"/±0.2mm
- No SPC output
- Depth bar provided



Order No. MT80-700-113

Regular Price \$91.50

Sale \$69.95

MT-787*64

E

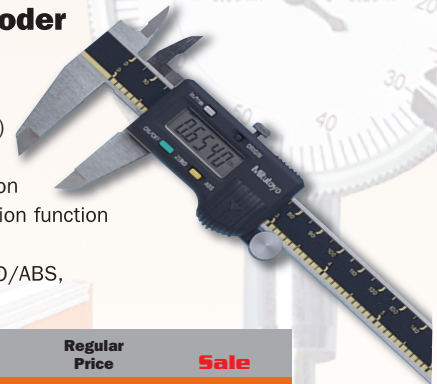
0-6" / 0-150mm Digimatic Calipers with Absolute Encoder

Features

- Zero-setting of the display position (incremental mode)
- Large LCD digits
- 0.0005"/0.01mm Resolution
- Scale contamination detection function

Specifications

Function: ORIGIN Setting ZERO/ABS, ON/OFF – Inch/Metric



Remarks	Order No.	Regular Price	Sale
No Output	MT80-500-196	\$128.00	\$ 94.90
SPC Output	MT80-500-171	149.00	133.90

E

MT-788*64

Limited Edition 70th Anniversary Tool Kit

Special Purchase



Consisting of:

- 500-752 IP-67 0-6" Coolant proof caliper
- 293-340 IP-65 0-1" Coolant proof micrometer
- (2) .2" and .3" ASME grade 0 ceramic gage blocks
- Wooden case

Order No. MT80-916-971

Price \$286.90

MT-689*64

C

Fowler Measuring Tools

XTEST Horizontal Test Indicator Features Twice the Test for Less



- .060" Range
- Graduation: .0005"
- Dial reading: 0-15-0
- Dial diameter: 1½"
- Jeweled movement
- Revolution counter
- Easy-to-read tilted dial
- Automatic reversal
- Swivel arc: 210°
- .080" Tungsten carbide point
- Includes 2 dovetail stems
- Furnished in molded case

2 Xtra Contact Points .040" & .120" w/purchase

Order No. NA55-52562001

Regular Price \$99.95

Sale \$74.00

2-6" Dial Bore Gage Set with Carbide Anvils

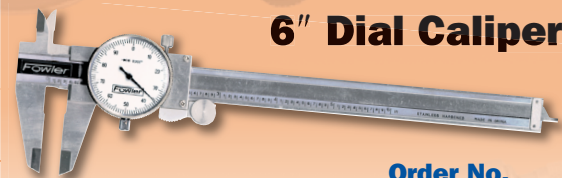


- Easy-to-read
- Graduation: .0005"
- Chrome plated handle
- Insulated grip
- Includes extension holder and fitted case

Order No. NA55-52646300

Regular Price \$115.00

Sale \$74.00



6" Dial Caliper

- 4-Way measurement
- Graduations: .001"
- .100" per revolution
- Hardened stainless steel rack
- Supplied in shop hardened case

Order No.

NA55-52008007

Regular Price \$49.95

Sale \$26.90

X-DEPTH 22[®] Dial Depth Gage



2 Xtra Contact Points w/purchase

Order No. NA55-52125006

Regular Price \$145.00

Sale \$59.90

- Range 0-22"
- Carbide contact point
- Includes 2 extra points for small hole applications; one 0.175" dia. x 1" long and one needle point x 1" long
- 0-1" travel indicator
- .001" graduations
- Rods connect together for full 22" capacity
- Satin chrome finish
- Base size: 4"
- Complete in shop hardened case

0-3" Micrometer Set with Insulated Frames



- Graduations: .0001"
- Carbide tipped measuring faces
- Locking lever
- Supplied with standards
- Complete in shop hardened case

Order No. NA55-52229213

Regular Price \$99.95

Sale \$67.00

MT-789*64



12" Digital Count Dial Height Gage

- Carbide tipped scribe
- Chrome plated double beams
- Set zero counter at any height within range
- Double counters each register separately
- Easy-reading, high visibility black dial face with orange hand
- Fine adjusting wheel & lock
- .001" Dial graduation, .100" Dual digital counters

Special Purchase

Order No. MV40-87254

Sale \$289.95



MT-748*64

brown & sharpe

Special Purchase

0-6" TESA Digit-Cal Caliper



- Measures outside, inside, depth and steps
- Absolute measuring system
- Reference scale for quick confirmation
- Frame constructed from stainless steel, hardened and ground
- Tough nylon housing protects the electronic components
- Automatic shut-off extends battery
- Large 1/4" high display

Order No. MV40-29013

Special Price \$69.90



MT-653*64

Prices Effective January 1, 2006 Through March 31, 2006

13